



**Manufacturer Purgo Biologics Inc.**

812, 27, Dunchon-daero 457beon-gil, Jungwon-gu, Seongnam-si, Gyeonggi-do, 13219, Korea  
 Tel. +82 70 4827 5352 | E-mail. overseas@purgobio.com | www.purgobio.com

**EU Importer Purgo Biologics Europe SAS**

1 Square Félix Bloch – Pôle Activ Océan – 85300 Challans – France  
 Tel. +33 (0)2 28 10 61 02 | E-mail. europe@purgobiologics.com | www.purgo-europe.com



# THE Cover™

Resorbable collagen membrane with high biocompatibility

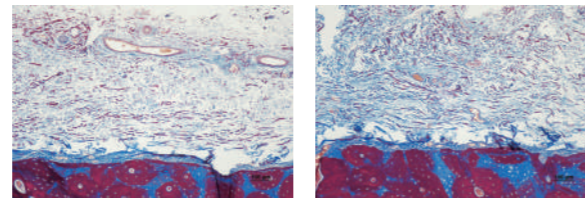
- **THE Cover** is a resorbable membrane consisting of porcine originated Type I Collagen.
- It is safe and has high biocompatibility as manufactured by an inherent physical crosslinking method (Self-Assembly Technology) of Purgo without using any chemical crosslinking agents.
- **THE Cover** is divided into two types; Flex type with excellent flexibility and Stiff type for space maintenance.
- Thorough quality control is carried out from raw materials to customers.

## Biocompatibility and Safety

**THE Cover** is a resorbable membrane originated from a pure Type I Collagen, and it's highly biocompatible and cell-friendly since chemical crosslinking agent was not used.

It has a dense structure that effectively prevents the downward movement of soft tissue, helping bone regeneration.

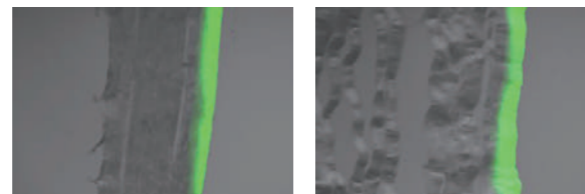
### | In-vivo beagle experiment | (Masson Trichrome)



THE Cover (Flex)

THE Cover (Stiff)

### | Infiltration Test |



THE Cover (Flex)

THE Cover (Stiff)

### \* In-vitro test

Cross-sections of confocal images showing infiltration of bovine serum albumin (BSA-488) after 48hr

## Hydrophilicity and Morphology maintenance

**THE Cover** is hydrophilic and has excellent adhesion as it maintains its shape even after being left at room temperature for more than 30 minutes after hydration.

### | Dehydration Test | (After 30min)



THE Cover (Flex)

THE Cover (Stiff)

## THE Cover™ Flex or Stiff

### THE Cover Flex

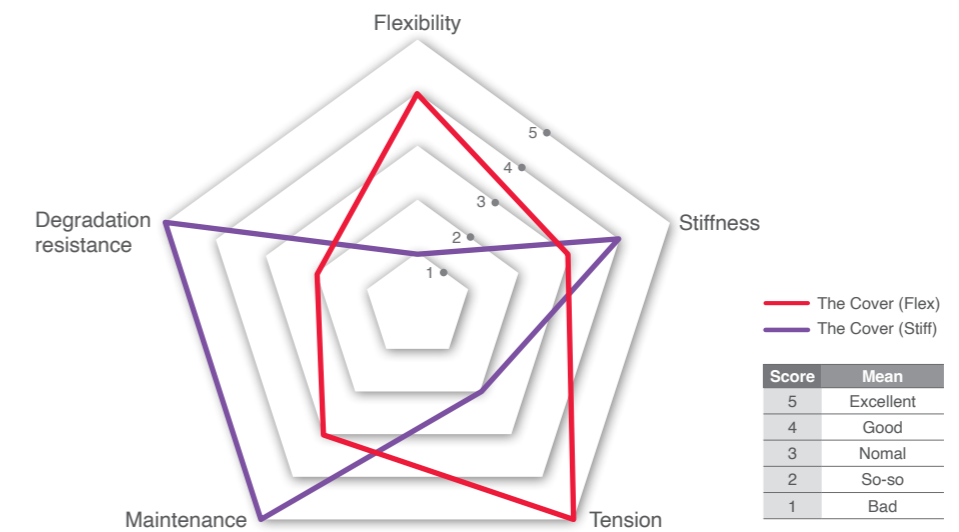
**THE Cover Flex** can cover an irregular surface with high flexibility. It has practically useful extension and offers convenient handling.

### THE Cover Stiff

**THE Cover Stiff** is favorable for space maintenance with its high stiffness and ability to maintain space.

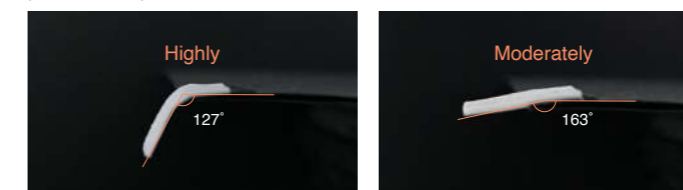
It is strongly resistant to biodegradation and suitable for indication that requires a longer time for bone maturation.

### | Radial graphs |



## Experimental References

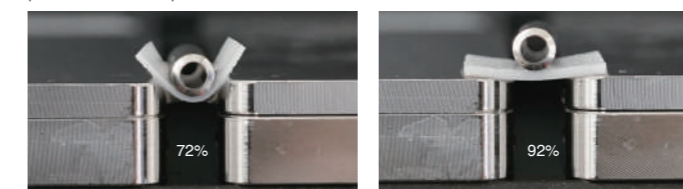
### | Flexibility |



THE Cover (Flex)

THE Cover (Stiff)

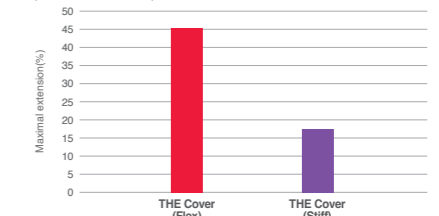
### | Maintenance |



THE Cover (Flex)

THE Cover (Stiff)

### | Extension |



### | Collagenase degradation |

